

Newsletter December 2025



Pacifica Network Welcomes WPNX

[WPNX](#) in Pensacola, Florida joined the Pacifica Network in early 2025. They have been busy with planning fundraising, antenna installation, and infrastructure. They intend to go on-air in October of 2026.

The station manager is Sean Linezo.

"The difference in community radio is the community part."

GRC 2026

Cast Your Vote

Four stations have volunteered to host the 2026 Grassroots Radio Conference:

- [WTLE](#) Leesburg, FL
- [WTJU](#) Charlottesville, VA
pw: G%b@*9kt
- [WPNX](#) Pensacola, FL
- [KOWN](#) Omaha, NE

If you would like to learn more about these stations and cast a vote for next year's host, click on the links to hear

"We believe community radio stations are more than audio outlets and more than a political soapbox, they're cultural institutions. These are places where people meet across differences, build shared experiences, and participate in real space and time."



Local Democracy is Holding Strong, but Rural Communities are Falling Behind, New Survey of Michigan Officials Shows

By **Stephanie Leiser**, *University of Michigan*

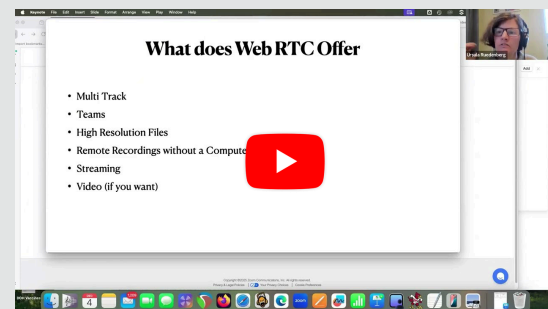
According to our [recent survey](#) of officials in [Michigan](#) communities, local democracy is humming along and city hall is taking care of business.

The federal government was [shut down](#) in October and November 2025, but cities and towns around the

each pitch. [Click here to take the voting survey.](#)

The survey will include questions on people's priorities in choosing a host.

[WXOX](#) Louisville's Sharon Scott helped organize the process and thanks all the stations for their submissions!



Alternatives to Zoom

December round-table.

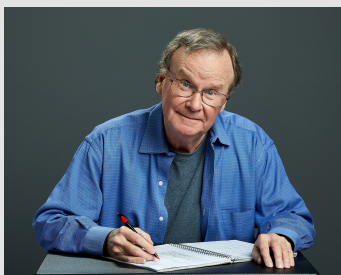
Joseph McGuire of [KSVR](#) in Mount Vernon, Washington discusses the pros and cons of doing interviews with WEB RTC options.

United States continued to fill potholes, purify drinking water, respond to emergency calls and issue construction permits, mostly with little fanfare.

But Michiganders should not take this local resilience for granted. Officials — especially in rural communities — are also raising some red flags about declining public engagement, deteriorating public discourse and harassment.

[Read the full story.](#)

Now in AudioPort



The View from Here

[5 MIN](#)

Eddie Holahan has been around the block and back. He wants to tell you about it.

For thirteen years Eddie has been broadcasting ***The View From Here***, a weekly five minute essay about



Reelin' in the Years

[2 Hour](#)

Reelin' In The Years (RITY) is your weekly dose of music education! Enjoy a blend of Rock, Blues, and Americana. Plus stories about the songs and artists. Give it a listen. I promise you'll learn something! For



The Soul Patrol

[Hour](#)

The Soul Patrol with Dave K is a guided tour through the heartbeat of groove — where classic funk, soul, and R&B from the '60s, '70s, and '80s meets the next wave of modern soul revivalists.

this funny, desperate,
beautiful life.

A smarter man than I
once called “The View
From Here” the place
where Andy Rooney
meets Confucious. I
think he meant that
wisdom can be fun, that
a story well told can
make a difference.

Produced by Charlie
Knower at [WDRT](#) in
Viroqua, Wisconsin

more information on the
show, visit
reelinwithryan.com

Produced
independently by Ryan
Janson in Cincinnati,
Ohio.

Each week we move
seamlessly from the
likes of Funkadelic,
James Brown and Kool
& The Gang onto Thee
Sacred Souls, Leon
Bridges, and Say She
She.

Alongside algorithm
proof, human-curated
audio, Dave K offers
Artists interviews,
insights and stories that
show how the old
school shaped the new.

Produced
independently
by Dave Keating in the
Catskills of NYS



Pacifica Network

816 Clark Ave, 50010, Ames

ursula@pacifica.org

[Vintage radio pic from Museum für Angewandte Kunst Köln](#)

All AudioPort photos used with permission

[Voting place photo by Rae Lowenberg](#)

This email was sent to {{ contact.EMAIL }}
You've received this email because you've subscribed to our newsletter.

[Unsubscribe](#)

