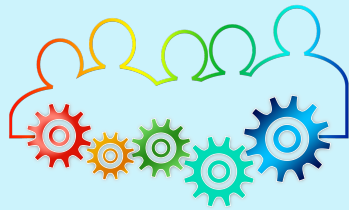


Newsletter 01.30.21**A Community Model**

"Inclusivity...comes from the inside out,...including our community not only as the voices on the air but [in] the decisions for how we offer those voices."

Jana Thrift of KEPW in Eugene, Oregon explains how her station changed its focus to better represent its listeners. [Read more.](#)

**Reminder for FCC
Filing Windows in
2021-2022**

If you are interested in upgrading an LPFM, time is of the essence. If you know someone who is thinking of starting a radio station, time is, yet again, of the essence. [Click here](#) for more information and guidance from the experts.

**New in
AudioPort****New in AudioPort**[Blaisin' Access](#)

Blaisin' Access is a weekly show highlighting people with disabilities, the issues they face, and opportunities to have an equal shot in life.

Coming Up for Black History Month

In February Sprouts will feature *Farming While Black* from the [Got Science Podcast](#), *African Workers Unite* from [WBPU](#), and *The story of Andre Hill and Casey Goodson* from Evan Davis at [WCRS](#) and [WGRN](#). These shows will appear soon in [AudioPort](#).



Round-Table Requests

The year has just begun and we have already had some great [round-table discussions](#). For the first week of February we will talk about strategic planning with Matt Murphy of [WERU](#) in East Orland, Maine. If there is a topic you would like to address, let us know! Contact stephanie@pacifica.org

Pacifica Network
410 Douglas Avenue
Ames, Iowa 50010
ursula@pacifica.org



This email was sent to {{ contact.EMAIL }}
You received this email because you are registered with Pacifica Network
Microphone image by [form PxHere](#)

[Unsubscribe here](#)



© 2021 Pacifica Network